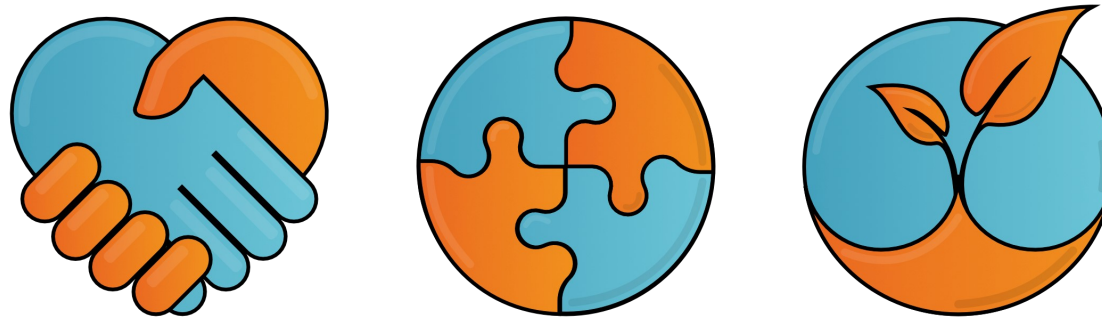


# ACES Malaysia

@GCRF\_ACES  
@my\_capsule  
@creativeculture17  
creativeculture.my  
#NewtonCreativeCulture  
#Gchangers  
#gc\_malaysia



A Community-Centred Educational Model for  
Developing Social Resilience through Play

Dr Jacey-Lynn Minoi, Prof Fitri Suraya Mohamad, et al.  
Co-Investigators  
[@jlminoi](#)



Economic  
and Social  
Research Council





# Welcoming



ISITI



KEMENTERIAN  
PENDIDIKAN  
MALAYSIA  
Jabatan Pendidikan Negeri Sarawak



UK Research  
and Innovation

FCSIT



chimbaka

IEEE Subsection Sarawak



Ministry of Tourism,  
Arts, Culture, Youth  
and Sports Sarawak

Institute of Borneo Studies



MINISTRY OF EDUCATION, SCIENCE AND  
TECHNOLOGICAL RESEARCH SARAWAK  
KEMENTERIAN PENDIDIKAN, SAINS DAN TEKNOLOGI SARAWAK





**JACEY-LYNN MINOI**  
COMPUTER SCIENTIST



**FITRI SURAYA**  
EDUCATIONIST



**FLORIANNA**  
ENGINEER



**CHUAH KEE MAN**  
LEARNING SCIENTIST



**LEONARD**  
ENGINEER



**FARAH**  
GIS ANALYST



**TAN CHONG ENG**  
COMPUTER SCIENTIST



**AAZANI**  
MARINE BIOLOGIST



**TARMIJI**  
GIS ANALYST



**JAYA**  
RESEARCH ASSISTANT



**MONICA**  
RESEARCH ASSISTANT



**ISMAIL**  
RESEARCH ASSISTANT

# Our Team

# Aims for Sarawak

Advancing in an inclusive and equitable quality education in moving towards IR4.0 in the state of Sarawak (Sarawak's Digital Economy Agenda)

In-line with the Education 4.0 initiative (World Economic Forum, 2020).



UPSKILLING TEACHERS



CO-CREATING WITH  
TEACHERS AND STUDENTS  
AND COMMUNITY ACTORS



IMPROVING DELIVERY OF  
CURRICULUM AND  
ENHANCING PEDAGOGY



UNTAPPING TALENTS IN  
SCHOOLS AND WITHIN  
COMMUNITIES



# New approach of learning (post-pandemic and onwards)

---

- A more personalised way of learning
  - Accelerate remote learning
- The education process is “shifting the focus from teaching to learning”
  - Embrace data analytics – optimise learning strategies to suit students’ needs
- The World Economic Forum predicted by 2020, “*more than a third of the desired core skill sets of most occupations will be comprised of skills that are not yet considered crucial to the job today.*” The soft skills they claim will soon become indispensable. The list includes complex problem solving, social skills, and process skills.



# Education and Innovation

- Innovation & Design
- Social Innovation
- Entrepreneurship

## 2020 Top Skills by the WEF

- Complex Problem Solving
- Critical Thinking
- Creativity
- Emotional Intelligence
- Cognitive Flexibility

Source: Future of Jobs Report, World Economic Forum



## Current identified gaps

- There is a growing disconnect between education systems and labour markets.
- With an increased premium on both digital and social-emotional skills in the coming years, are today's children ready for new job types that do not yet exist?
- The gap between education and jobs is exacerbated by limited innovation in learning systems.

# ACES Malaysia's Focus

---

## Areas

STEM education  
Engineering and technology  
Climate change  
Socio-economy  
Cultural heritage  
Special needs and learning disabilities  
Sustainable agriculture

## Deliverables

Champions – teachers and students  
Holistic and adaptable educational model  
Innovations from the teachers and students

## Measurements

The captured transformations through inclusive and equitable quality education (SDG 4) including social and economic resilience for impacting development outcomes (e.g. economic and welfare).



## Our stakeholders and partners

- **Advisor:** YB Datuk Hj Abdul Karim Rahman Hamzah, Minister of Tourism, Arts, Culture and Youth, Sarawak
- Sarawak State Education Department (JPNS)
- Ministry of Education, Science and Technological Research (MESTR)
- Sarawak Development Institute (SDI)
- Chumbaka Kuching
- Koperasi Belia Inovatif Sarawak (KOBIS)
- Institute of Borneo Studies
- IEEE Sarawak Subsection
- Teachers, students, communities are the sites

# Potential ACES schools and sites



## **Schools in the whole of Sarawak**

Selected schools by the Sarawak State Education  
Department



## **Rural and Remote sites**

Highlands: Ba'kelalan, (Long Lamai)

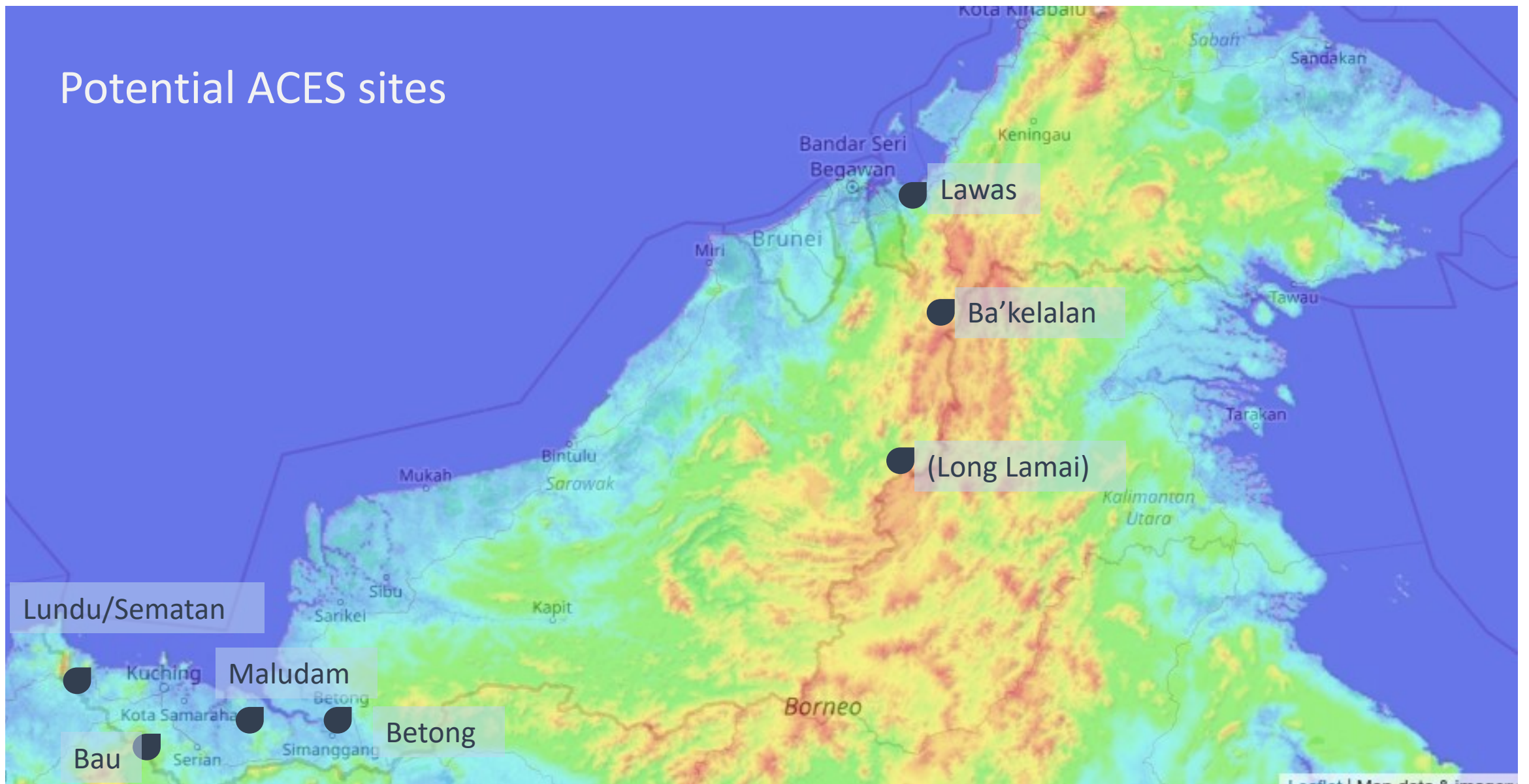
Northern: Lawas

Southern: Bau

Midland: Betong

Coastal: Lundu/Sematan, Maludam/(Bako)

# Potential ACES sites

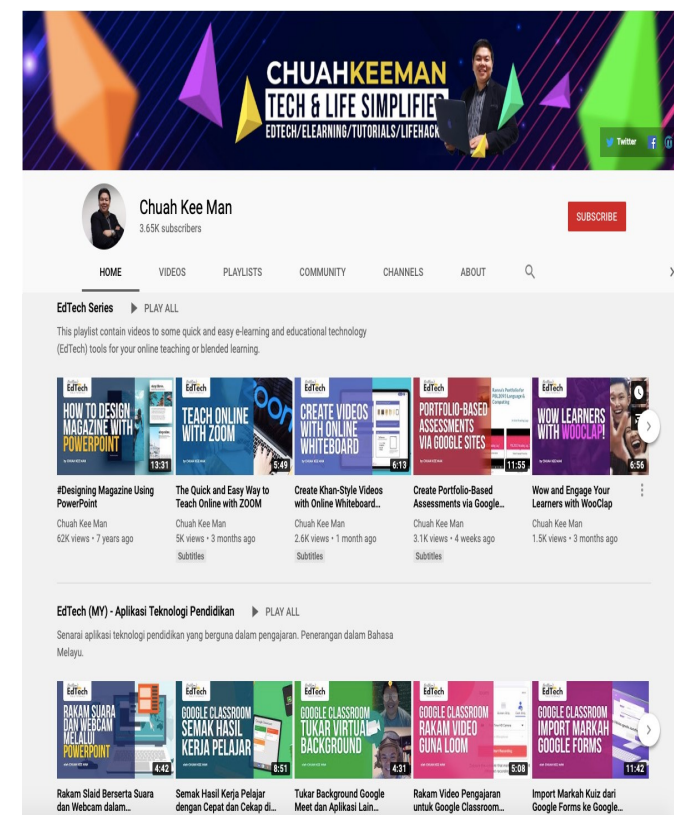
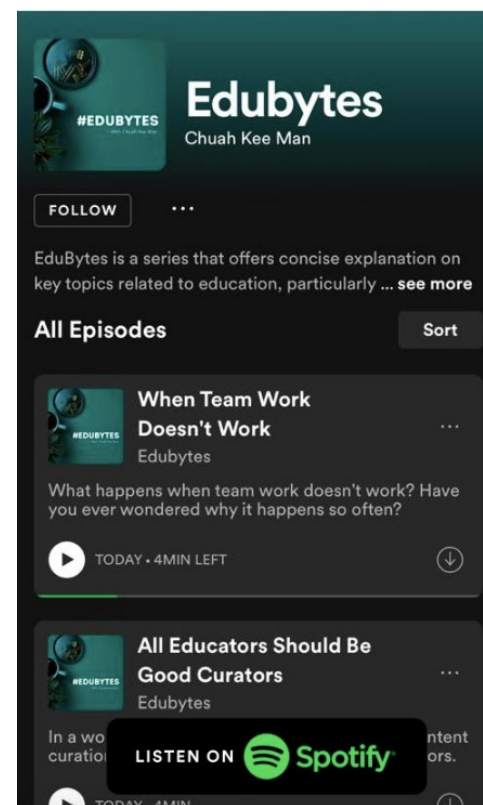






# What we have been up to?

- Meetings with stakeholders, partners, and team
- Country report, pandemic report
- Webinars, online materials





# What we have been up to?

- A prototype of the hand sanitizer foot dispenser for clinics and hospitals
- COVID-19 data analysis for Sarawak

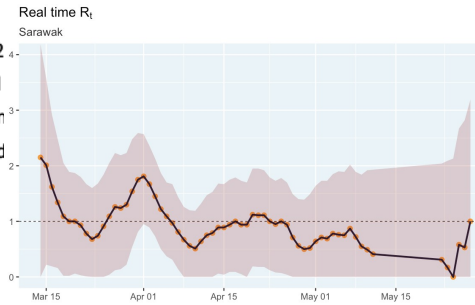
## How Many Weeks of MCO Did it Take to Sustain the SARS-Cov-2 Effective Reproduction Number to Less Than 1?

Dr Jacey-Lynn Minoi and Prof. Andrew Kiyu  
For Sarawak COVID-19 Taskforce on Data Analysis  
5 June 2020

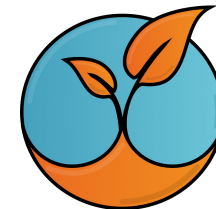
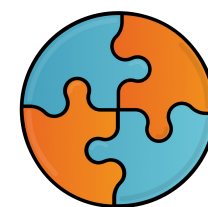
### SUMMARY

1. The successive MCOs that was implemented in Sarawak had succeeded in bring the  $R_t$  down to less than 1, thus ending the first wave of the outbreak.
2. It took 3 to 4 weeks for the MCO to sustain the  $R_t$  to be less than 1.
3. To have maximum effect the MCO must be implemented as fast as possible.

- Pei et al (2023) implemented of reported in 3, 2020 could







Look out for the ACES Malaysia activities

# Calling for educators and partners



**TRAINING, WORKSHOPS,  
COMMUNITY  
ENGAGEMENTS**

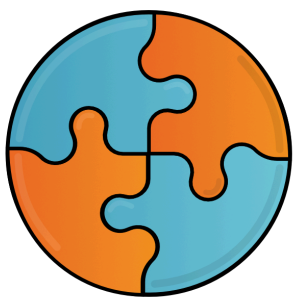


**EXPO, COMPETITIONS**



**INNOVATIVE SOLUTIONS, LEARNING  
GAMES, TOOLKITS FOR COMMUNITY-  
CENTRIC SOCIAL INNOVATION,  
GAMIFICATION BLUEPRINT**

# ACES



A Community-Centred Educational Model for  
Developing Social Resilience through Play

## Thank You

We want you to be part of  
our ACES Malaysia team!

[https://is.gd/aces\\_my](https://is.gd/aces_my)

Website: <https://creativeculture.my>



Economic  
and Social  
Research Council

